



Proposed Technical Assistance to Kidera 'Adopt a village'

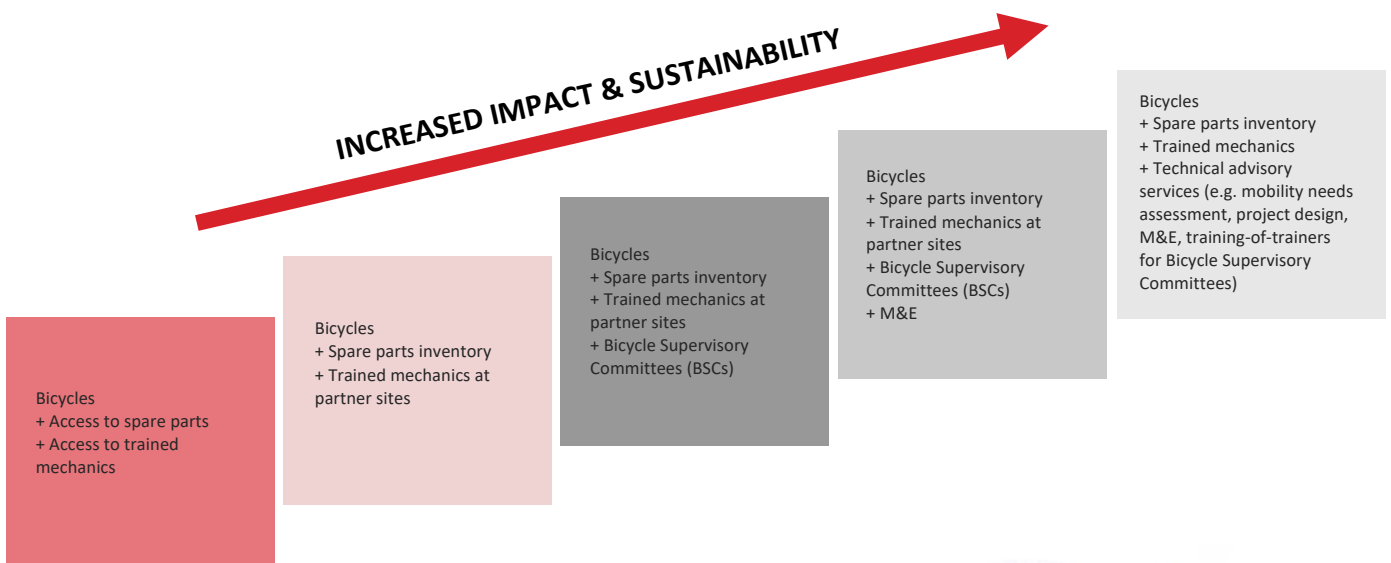
August 21, 2023



INTRODUCTION

Bicycle transport and mobility programming have proven to amplify development impact, lowering girls students’ dropout rates by 19%, boosting community health worker patient visits by 88%, and increasing small-holder incomes by 23%. Buffalo Bicycle’s rugged, purpose-built Buffalo Bicycle, coupled with technical assistance services, provides customizable and cost effective bicycle transport solutions. With more than 715,000 bicycles distributed and over 3,000 community-based mechanics trained since 2005, Buffalo Bicycle offers customized products and services to maximize impact and sustainability.

Buffalo Bicycle Uganda looks forward to collaborating with ‘Adopt a Village’. Based on the Foundation’s preferences, we will provide Buffalo Bicycles, spare parts, mechanic training, and technical advisory services to ‘Adopt a Village’’s target areas in Uganda . We provide detailed descriptions of each proposed offering below.



DESCRIPTIONS

Buffalo Bicycles – The Buffalo Bicycle was designed from the ground-up for affordability, ease of maintenance, and the ability to withstand rugged conditions, heavy loads, and grueling daily use in challenging terrains. These attributes created an entirely new category of bicycle.

Backed with an industry-leading 5-year warranty on the frame, fork, and rear carrier and ISO-certification, the Buffalo features:

- a 15-gauge carbon-steel alloy frame for maximum strength and durability,
- a universal 26” frame with a dipping top tube and highly adjustable seat post and handlebars to allow men, women, and children of all heights to tailor and comfortably use the bicycle, and
- a 100kg rated rear carrier to provide maximum adaptability for bulky, heavy loads, an extra passenger, or everyday cargo.



A detailed specification sheet for the Buffalo Bicycle can be found on page 5.

SPARE PARTS

With the purchase of Buffalo Bicycles, we recommend a one-year supply of spare part inventory to keep on-hand for repair and preventative maintenance. Buffalo Bicycle will help the Foundation establish spare parts inventory management by community partners, helping ensure spare parts demand is driven by users and their local mechanics (further described in the *Bicycle Supervisory Committees* section on the following page).

COMMUNITY-BASED MECHANICS

Even the most rugged bicycle requires maintenance and repair. To promote sustainability and ensure bicycle users have easy access to critical maintenance and repair services, a Buffalo Bicycle master mechanic will **train community-selected mechanics in preventative maintenance, diagnosis, and repair**. With an accessible, trained mechanic within the Foundation’s target communities, bicycle users are able to keep their bicycles in good repair, maintain high utilization rates, and amplify the impact of each bicycle. The training workshop will include the following.

- Applied skills and understanding of bicycle repair, preventative maintenance, diagnosis, and repair, as well as maintenance cataloguing/record keeping,
- A complete set of quality mechanic tools,
- A Buffalo Bicycle to allow for mobility and support to multiple sites,
- A pair of mechanic’s work overalls, and
- Access to spare parts when part of a broader integrated bicycle transport activity.



BICYCLE SUPERVISORY COMMITTEES (BSCs)

Community engagement and empowerment is an important factor in maximizing impact on an integrated bicycle transport activity. With seventeen years of experience supporting partners’ activities and implementing our own programs, Buffalo Bicycle has refined a **proven program model that works with and through community members** to ensure transparency, accountability, and adaptation to local conditions. A critical element of this community-driven program model is Bicycle Supervisory Committees or BSCs.

Buffalo Bicycle will provide **capacity building workshops for BSCs**: groups of two to twelve community leaders that are charged with oversight, management, and support of bicycle mobility programming. BSCs oversee

mechanics, ensure bicycles are used for their intended purpose, assist with spare parts inventory management, and can assist with data collection related to participants’ bicycle use. Programs that incorporate BSCs have higher bicycle utilization rates, more reliable mechanics, regular access to spare parts, enhanced community sensitization and support, and improved development outcomes. Depending on the local context, BSC responsibilities may be absorbed by an appropriate existing community structure—such as parent teacher association, cooperative, or health clinic—or established as a new community group. Illustrative BSC members include school administrators and PTA members (education), lead farmers and cooperative leadership (livelihoods), and/or head nurses and long standing community health workers (health). To promote cost and time efficiency, Buffalo Bicycle proposes conducting a training-of-the-trainers. We will train a core group of BSC members (e.g. two to five members) per BSC, and offer guidance and training materials to provide onward training to fellow BSC members.

With turnkey curriculum, manuals, and toolkits already developed and adapted based on previous programs, the **BSC training-of-the-trainers capacity building workshop includes the following subjects:**

- Program adherence (i.e. ensuring bicycles are used for their intended purpose by recipients),
- Mechanic selection and oversight,
- User support and troubleshooting,
- Spare parts inventory management, and
- Service-to-own agreements (optional) (contracts whereby bicycle users sign agreements to remain in school for a BSC-determined period of time, or serve in their role for a mutually agreed upon term (e.g. two years); upon completing the term, bicycle users take ownership of their bicycle, which can serve as a powerful incentive retention and motivation for bicycle users to keep their bicycles in good repair).



MONITORING, EVALUATION, AND LEARNING (MEL)




Buffalo Bicycle will also offer guidance and recommendations on implementing and measuring results in “adopt a village’s target areas. Our experience spans education and livelihoods. Drawing on the global best practices and global staff expertise, we can offer a broad spectrum of MEL technical assistance, including guidance on the following.

- Direct data collection and evaluation
- Baseline and endline surveys





- Technical assistance in applying a mobility lens to existing indicators and existing MEL activities

IMPACT OF BUFFALO BICYCLE TRANSPORT

HEALTHCARE

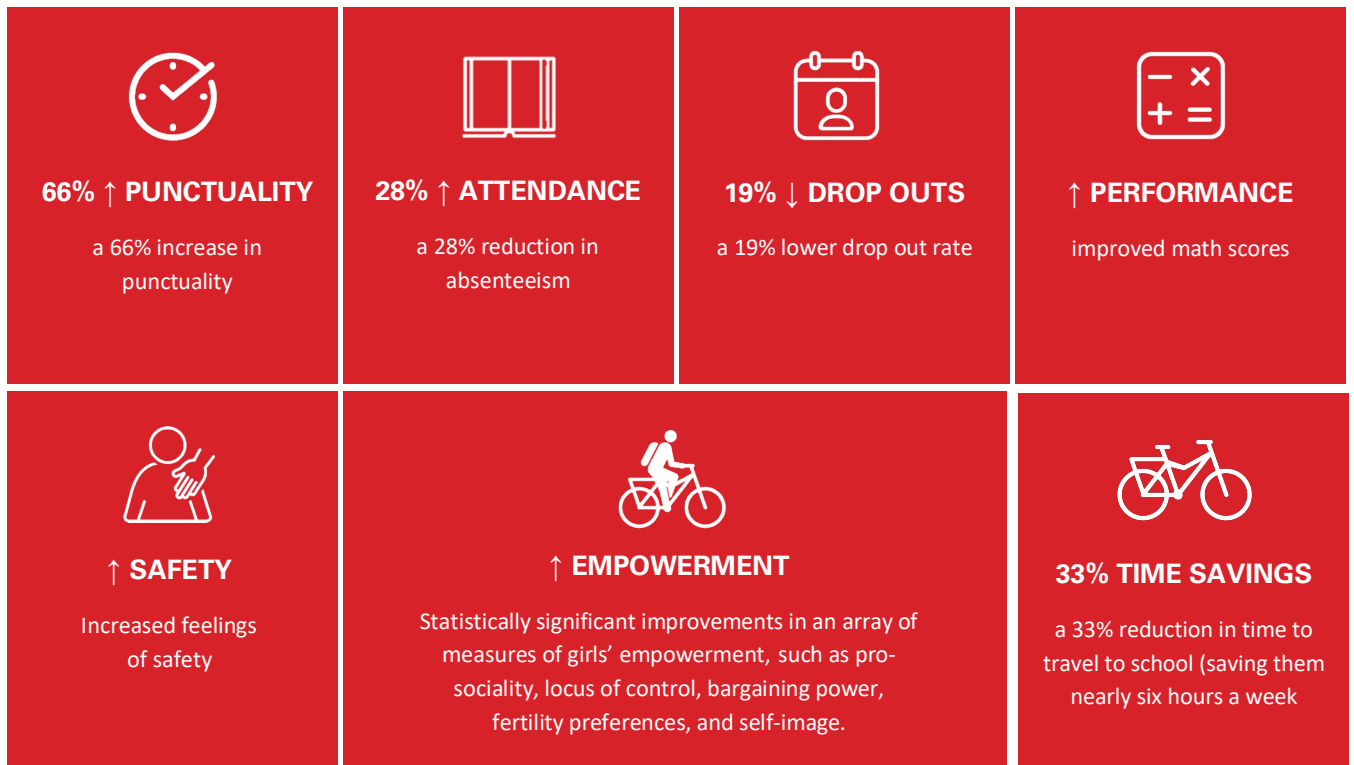
 <p>88% ↑ REACH</p> <p>With a bicycle, health workers can travel four times further and increase monthly patient visits 88%, on average.</p>	 <p>95% RETENTION</p> <p>With a two-year service-to-own incentive agreement for a bicycle, health worker retention rates reached 95%.</p>	 <p>50% ↑ REFERRALS</p> <p>Patient referrals to health services increased up to 50%, and tuberculosis drug defaulter rates fell to 0% in a sample of clinics with specialty trained and mobilized health workers.</p>
--	---	--

ECONOMIC OPPORTUNITY

 <p>25% ↑ PRODUCTIVITY & 23% ↑ INCOME</p> <p>With a Buffalo Bicycle, smallholder dairy farmers increased their deliveries by 25% and incomes by 23%.</p>	 <p>UPSKILLING</p> <p>Lead farmers increased their follower farmer visits by 120% with a Buffalo Bicycle, and 79% of lead farmers were able to visit more follower farmers per month.</p>	 <p>FINANCING</p> <p>Through a farmer-based organization bicycle purchase program, farmers financed the purchase of their bicycles and achieved a 100% repayment rate.</p>	 <p>45% TIME SAVING</p> <p>Smallholders' time to market dropped by 45%, saving them over 3.5 hours/week and reducing post-harvest losses.</p>
--	---	---	---

EDUCATION

According to a randomized controlled trial by Innovations for Poverty Action (2019)*, girls with Buffalo Bicycles and supportive programming achieved:



*<https://worldbicyclerelief.org/woc/>



Buffalo Bicycles Uganda Limited,
 Kyadondo, Block 243 Plot 2759,
 Luzira Industrial Park,
 P.O. Box 116993,
 Kampala, Uganda.
 VAT/TIN 1031195215
 www.BuffaloBicycle.com
 www.WorldBicycleRelief.org

Re: Quotation for Buffalo Bicycles: **Kidera - Adopt A Village**

To: Rotary Club of Kitzbuhel

Date: 24/Aug/2023

Qty	Description	Price per Unit	Total USD
Bicycles Costs and Transport			
75	Buffalo MTB Bicycles	\$ 209.00	\$ 15,675.00
75	Toolkits & 5-Year Limited Warranty	\$ -	\$ -
1	Spare Parts Starter Kit	\$ 422.70	\$ 422.70
1	Transport	\$ 544.00	\$ 544.00
1	Program Technical Support	\$ 5,475.80	\$ 5,475.80
<i>Subtotal</i>			\$ 22,117.50
Bicycle Costs and Transport Payable to Buffalo Bicycles Uganda			\$ 22,117.50

Bank Details:

Buffalo Bicycles Uganda Limited
 Stanbic Bank Uganda Limited, Garden City Branch, Kampala.
 USD Acct # 9030021576572
 SWIFT Code: SBICUGKXXX / Sort Code: 040147



**BUFFALO
BICYCLES**
www.buffalobicycle.com

BUILT FOR BIG LOADS
ON TOUGH ROADS

Universal MTB



Colour

Black w/ silver decals

Frameset

Frame

Carbon steel, heavy duty dropouts

Fork

Carbon steel, 1" threaded w/internally tapered steerer

Sizes

19", universal fit w/ dipping top tube

Wheels

Hubs

Front steel, rear coaster brake

Rims

26", 36h, steel, ISO 559mm diameter

Spokes

13G high-carbon steel

Tires

26 x 1.95"

Tubes

1.2mm Butyl, Schrader valve

Drivetrain

Crank

Steel, square taper, 44T, 170mm

Bottom Bracket

Sealed cartridge, square taper, 68x115mm

Pedals

Nylon body, cold forged spindle

Cockpit

Saddle

Reinforced base and rails, UV-resistant cover

Seatpost

25.4mm x 350mm, steel

Handlebar

Steel 25.4mm clamp, 585mm width, 24 degree sweep

Grips

PVC with reinforced ends

Stem

Steel, 1"quill, 25.4mm clamp, 90mm extension, 60mm reach, 15 degree rise

Headset

JIS 1" threaded, steel

Brake set

Rear: coaster brake hub
Front: optional servo drum

Brake lever

Optional plastic-coated steel

Extras

Mudguards

Steel w/ flares

Carrier

Steel, rated to 100kg

Stand

Steel, locking center stand

Reflectors

Attached to spokes and rear mudguard

Accessories

Bell, lock, pump, mini-tool, tire lever